



APPLICATION MANUAL

Sewing & hand application

PRECIOSA



Sewing and hand application

Preciosa Components offers a wide range of various products ideal for sewing and embroidery. Thanks to a rich choice of shapes, sizes, settings and applications, Preciosa crystals can be used in mass apparel and accessories production, designer's studios and Do-It-Yourself activities. Stones can be easily applied with industrial sewing or embroidery machines or household sewing machines and are also suitable for various manual applications.

PRODUCT OVERVIEW

	COMPONENTS	SEWING	HAND APPLICATION
Flat Back Stones	Sew-on Stones	✓	✓
Beads and Pendants	Beads	✓	✓
	Pendants	✓	✓
Nacre Pearls	Nacre Pearls	✓	✓
	Cup Chains	✓	✓
Fashion and Fashion Jewelry Components	Plastic Bandings	✓	✓
	Metal Bandings	✓	✓
	Stones in Settings	✓	✓
Fashion and Fashion Jewelry Application	Crystal Mesh	✓	✓

MACHINES, TOOLS AND AIDS

Use the following machines, tools and aids for sewing Preciosa components:

- Household sewing machine with common stitch types (straight, zigzag, button sewing programme).
- Industrial sewing machine.
- Sewing machine accessories – presser feet, needles, threads.
- Goggles.



Household sewing machine



Industrial sewing machine



Different types of presser feet

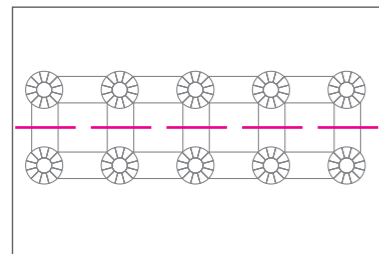
Sewing – basic rules

CHOICE OF THE RIGHT THREAD

Synthetic threads of 50 – 60 Nm strength are the most suitable for sewing Preciosa stones. The threads are abrasion resistant and products with these threads are sufficiently resistant against any damage. Cotton threads are not suitable as their abrasion resistivity is lower.

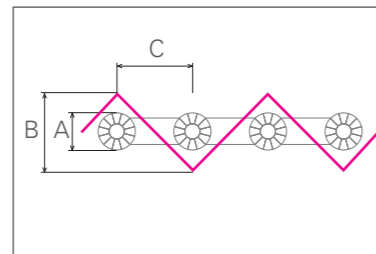
CHOICE OF THE STITCH TYPE

A wide range of stitches can be used for sewing Preciosa stones, beads and applications:



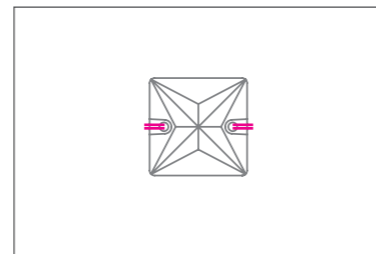
Straight stitch

The stitch length should be selected according to the space between the cups so that the stitch fits into the space.



Zigzag stitch

The length and width of the stitch has to be adjusted to the applied element. The stitch width (B) should be by 0,5 mm – 1 mm broader on both sides than is the applied crystal element (A). The stitch length (C) should be equal to ca. 2/3 of the stitch width. It might be necessary to reduce the tension of the upper thread sometimes.

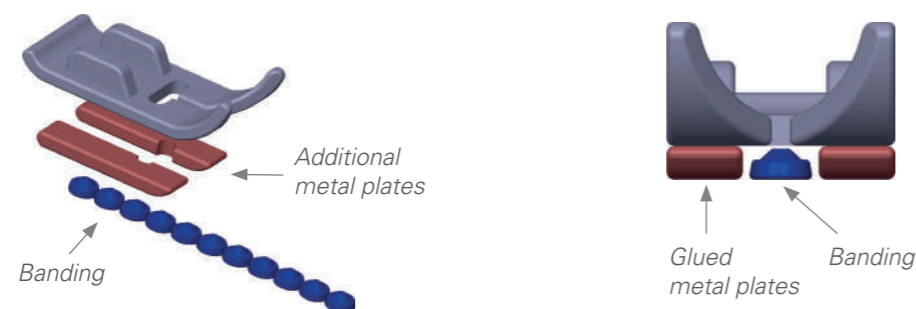


Button sewing programme

Sew-on stones can be easily applied using a button sewing programme. A correct stitch width must be chosen. Proceed according to the sewing machine manual.

ADAPTED PRESSER FOOT

A standard presser foot of the household sewing machine can be adapted for an easier sewing on of plastic bandings. Take two small metal plates and fix one on the left side and one on the right side of the presser foot with an epoxy glue. The resulting gap should be equal to the banding width.



TYPES OF MACHINE APPLICATION OF CRYSTAL COMPONENTS

APPLICATION	MACHINE	TOOL	PROGRAMME	NOTE
Sew-on stones	Sewing machine	Button foot	Programme for button sewing without the feed function	Switch off the lower feed, adjust the stitch width to the product
Plastic Bandings	Sewing machine	Adapted standard presser foot	Zigzag stitch	Adjust the stitch width to the product
		Zipper foot	Straight stitch	Net edges
	Sewing machine	Standard presser foot	Straight stitch, Zigzag stitch	Adjust the stitch width to the product
		Zipper foot	Straight stitch	Net edges
Metal Bandings	Sewing machine	Adapted standard presser foot	Straight stitch	
		Zipper foot	Straight stitch	Net edges
Cup Chains	Sewing machine	Adapted standard presser foot	Zigzag stitch	Adjust the stitch width to the product
Crystal Mesh	Sewing machine	Standard presser foot, Teflon presser foot	Straight stitch, Zigzag Stitch	Adjust the stitch width to the product For Zigzag stitch use the teflon presser foot to protect stones from getting scratched

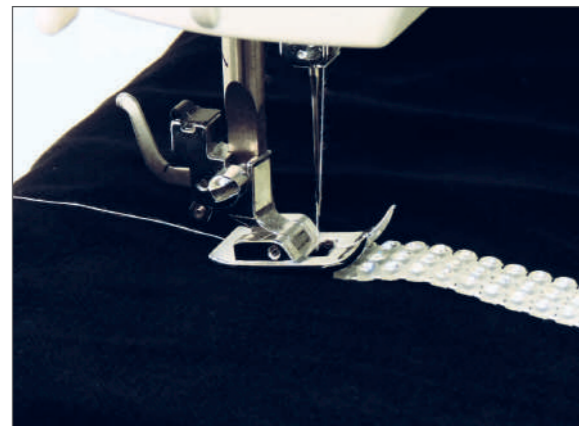
Application with a sewing machine

Choosing the right thread (strength ca. 50 – 60 Nm) and needle (strength ca. 80 Nm) is particularly important for sewing on applications. A right tension of the upper and lower thread has to be set on the sewing machine. The fabric must be smoothly stretched and the upper and lower thread should run easily and smoothly.

Tests with the material chosen for the application should be carried out before beginning the production.

It is important to set the sewing machine to the correct hole pitch and stitch length and width before sewing on crystal stones. This prevents the stones from being damaged during sewing on and reduces the risk of an injury.

When sewing high multi-row bandings, problems with the sewing machine feed caused by an inclined presser foot can occur. Use a height compensating pad to avoid this. Place it beneath the presser foot so that the presser foot is parallel to the material which then feeds through smoothly.



Inclined presser foot can cause problems with sewing machine feed of the base material.



The presser foot lies flat due to the height compensator.



Application of crystals with the lower feed switched off.



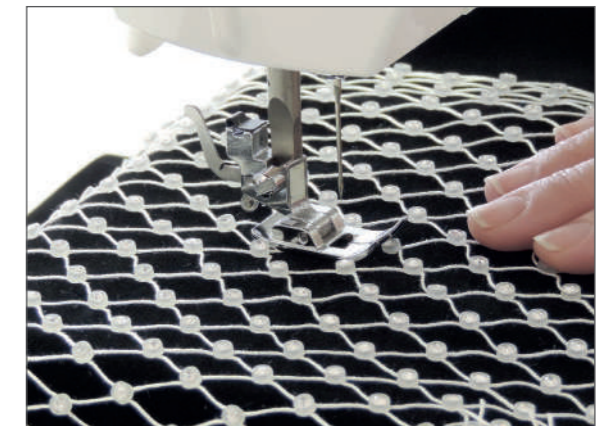
Application of one-row banding or a cup chain (zigzag stitch).



Detail of a zigzag stitch.



Multi-row banding and similar products are sewed on between the rows of stones.



Use a narrow „zipper“ foot when appropriate due to the applied product.

Hand application

All Preciosa products listed in the overview at the beginning of this chapter can be also used in hand applications. Extensive choice of various products offers endless possibilities for creation of your own design; the only limits are your fantasy and wishes.



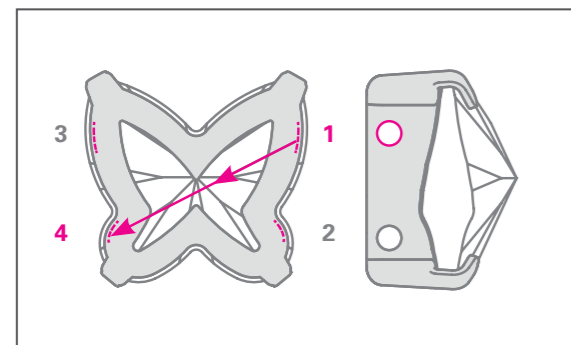
Note:

Crystal beads larger than 6 mm have to be fixed either by knotting or threaded on a suitable wire.

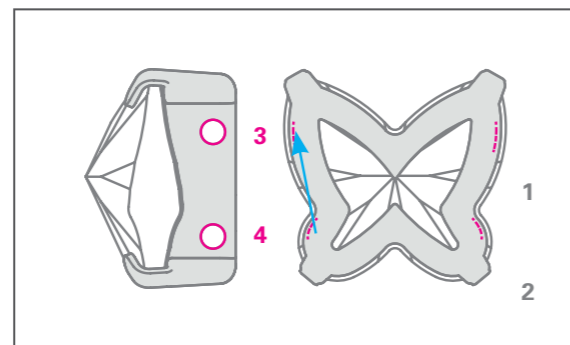
APPLICATION OF MC BUTTERFLY 601 IN SEW ON CUP

You will need: 0,6 mm needle; 0,3 mm thread

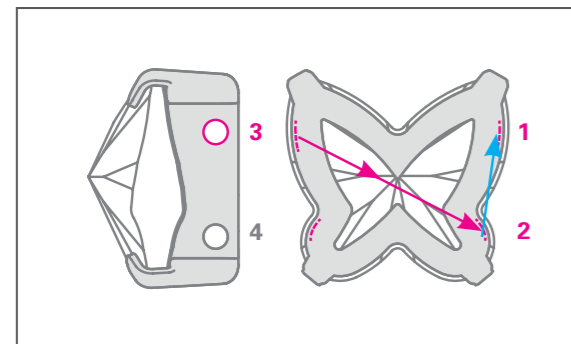
How to sew



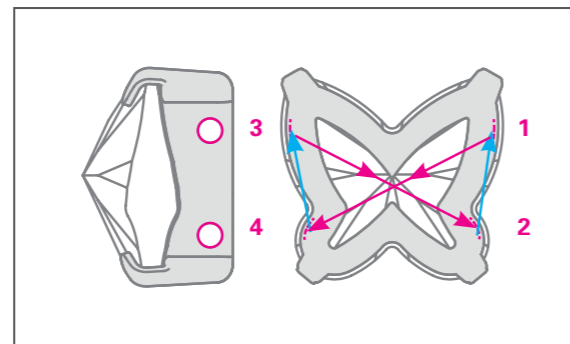
Pull the thread through from the underside of your material until the knot is snug. Thread the butterfly at point **1**, and continuing on its underside, thread your needle through the butterfly at **4**.



Turn the needle and sew through material at **4**, then come up at **3**.



Thread the butterfly from **3** to **2**, again along its underside. Turn the needle and attach the butterfly to material at **2**. Come back up through the material at **1**.



Repeat for added strength.

Important advice and information

POSSIBLE PROBLEMS, THEIR CAUSES AND RECOMMENDATIONS

PROBLEM	CAUSE
The product or fabric does not feed through correctly.	1, 2, 3
The sewing machine misses stitches.	4, 5, 6, 7
The thread tears.	4, 6, 8, 9
The needle breaks.	10, 11, 12, 13
The stones fall from the cups.	14

CAUSE	RECOMMENDATION
1 The foot pressure is too low.	Increase the foot pressure according to the instructions.
2 There is dust between the feeder teeth.	Clean the teeth.
3 The upper feed is faulty.	Replace the upper feed.
4 The needle is bent or damaged.	Replace the needle.
5 The needle is not fitted correctly.	Push it right up into the needle holder.
6 The machine is wrongly threaded.	Re-thread the machine.
7 The thread tension is incorrect.	Check the thread tension.
8 There are knots on the tread or it is too thin.	Check the thread for faults and change it if necessary.
9 The components forming stitches can be damaged.	Have the sewing machine checked by a specialist.
10 The wrong needle was used.	Choose a needle of correct size for the base material.
11 The bobbin is not fitted correctly.	Check the bobbin.
12 The needle is too thick and gets stuck in the product.	Use a thinner needle.
13 The needle hits the stone.	Sew more slowly and feed the product through the machine more carefully.
14 The needle damages the cup.	Check the stitch length and the needle thickness.

GENERAL RECOMMENDATIONS

	FASHION JEWELRY STONES		FLAT BACK STONES			BEADS AND PENDANTS		NACRE PEARLS	FASHION AND FASHION JEWELRY COMPONENTS					
	Round Stones, Channel	Fancy Stones, Ball	No Hotfix Stones	Hotfix Stones	Sew-on Stones	Beads	Pendants		Cup Chains	Plastic Bandings	Metal Components (Metal Bandings, Rondelles, Fancy Rondelles, Balls, Stones in Setting)	Crystal Net	Hotfix Transfers	Crystal Sheet
Turn inside out, choose a gentle wash cycle and use mild laundry detergent. To protect the crystals as much as possible, the use of a soft wash bag is recommended.	●	●	●	●	●	●	●	●					●	
Turn inside out, choose a gentle wash cycle and use mild laundry detergent. To protect the crystals as much as possible, the use of a soft wash bag is recommended.														●
Turn inside out and use mild laundry detergent.								●	●	●	●	●		
Do not use chlorine bleach!	●	●	●	●	●	●	●	●	●	●	●	●	●	●
Turn inside out and dry at reduced temperature.														
Do not tumble dry!	●	●	●	●	●	●	●	●	●	●	●	●	●	●
Iron inside out using a silk/polyester viscose setting. Ironing the textile inside out and using a pressing cloth is recommended.									●		●			
Iron inside out using a wool setting.			●	●	●								●	●
Do not iron! Do not iron directly over the crystals.								●	●			●		
The textile can be gently dry-cleaned using perchlorethylene. Turn inside out.	●	●				●	●							
The textile can be gently dry-cleaned using hydrocarbon.	●	●	●	●	●	●	●						●	●
The textile will withstand gentle professional wet cleaning. Turn inside out.	●	●	●	●	●	●	●						●	●
The textile may not be dry-cleaned.	●	●	●	●	●	●	●	●	●	●	●	●	●	●

Preciosa Components

A Member of the Preciosa Group

A global leader in luxury goods *manufactured from crystal*, the Preciosa Group is built upon centuries of glassmaking tradition and innovation. From hand-made lamp beads to our cutting-edge, bespoke lighting installations, Preciosa looks to our own unique heritage to draw inspiration for the future of premium, responsibly crafted Bohemian crystal. Together, the Preciosa Group operates a global network of 11 regional offices, completes more than 1,500 flights to customers annually and melts 40 tons of glass every day.

PreciosaComponents.com